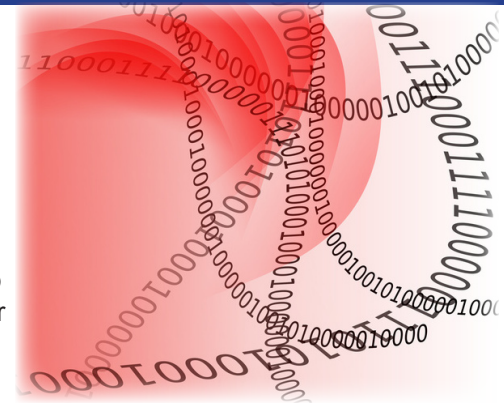


Data Acquisition (YES-DAQ)



Benefits:

- Quick response to process upsets
- Access to historical data to study and improve process strategy
- Detailed reporting
- Improved efficiency
- View process data in real-time
- Store process data
- Extract process data for analysis in Excel or other software
- May be used remotely or locally
- Connects to equipment via network or serial connection
- Runs on Windows
- Pre-installed on a YES Industrial PC

Overview

Yield Engineering Systems (YES) offers multiple software data collection options to increase visibility and control of your process. Trending, analysis and reporting options are available in two basic configurations that can be customized to accommodate unique requirements.

YES process management systems are designed to make detailed data collection easy. Real-time monitoring allows you to quickly react to process upsets, while access to historical data gives you the ability to study and improve your process strategy. Once a process management system is started, data storage is automatic; no operator action is required. Simply point and click to retrieve data and generate reports.

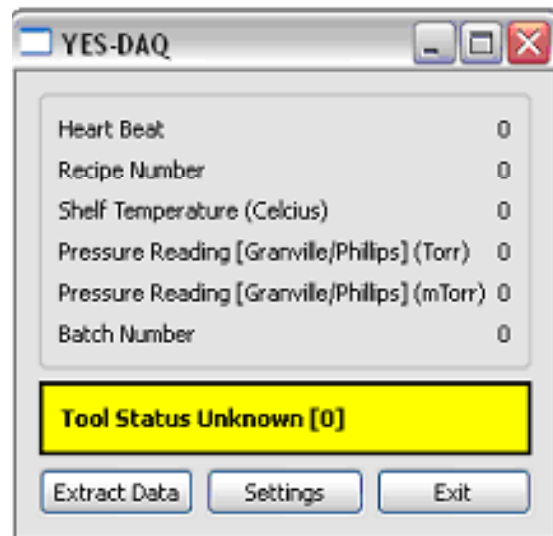
Option 1 - Standard Data Collection

Data acquisition is suited for data collection and analysis and operates on a Microsoft® Windows platform. Collection software communicates with a Control Technologies Corp.® (CTC) tool controller via Yield Engineering Systems Data Acquisition (YES-DAQ). Data is also retrieved via YES-DAQ.

For RS-232 connections, the server must be installed near the tool; distance is limited to approximately 30.5m (100 ft.) by the RS-232 serial communications line. All data capturing must be done on site, at the data collection server. At selected time intervals, the data collection software samples process data.

Record details include:

- Time and date stamp
- Numerical lot number
- Recipe number
- Chamber pressure
- Process temperature
- Gas flows (if optional mass flow controllers were installed)
- Process gas control valve state
- Vacuum flow control valve state



YES-DAQ Record Details

For data analysis, process data is retrieved by time/date or by batch number. The application displays all system data, system status and valve status. Process data can be exported to Excel® for printed reports.

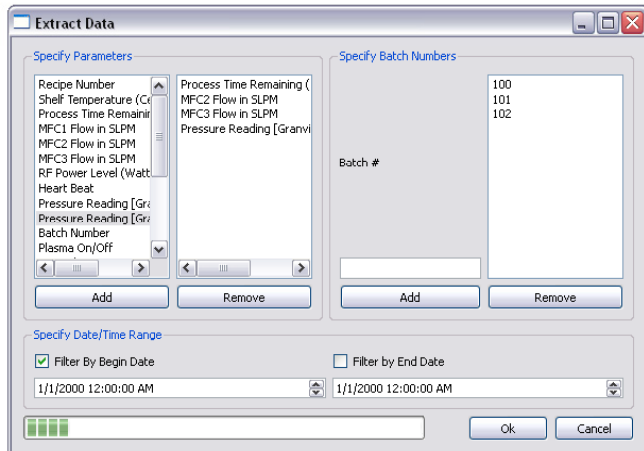
Yield Engineering Systems provides the PC server pre-loaded with software and custom templates so you can immediately begin collecting data and generating reports.

Software includes:

- Microsoft® Office
- MySQL Server
- Yield Engineering Systems Data Acquisition Software (YES-DAQ)

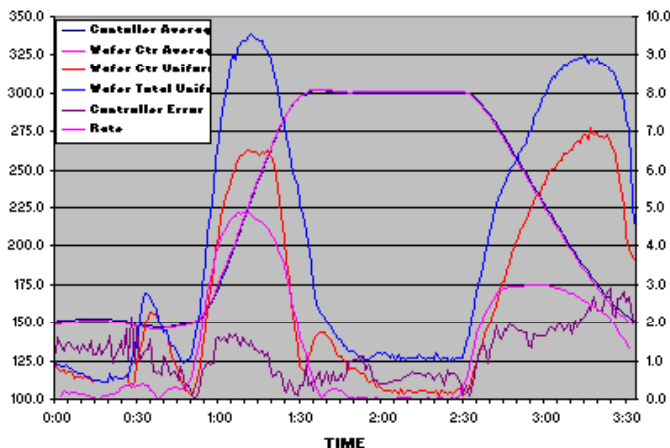
The SQL Server starts as soon as the computer is turned on. YES-DAQ also starts automatically, and connects to the tool and database. At this point, the system is collecting your data.

Use the extract data feature to save process data to a Microsoft Excel spreadsheet.



YES-DAQ Extract Data Feature

Then plot data, and measure process capability. The standard option includes an additional RS-232 serial communications port added to the tool controller and an additional communications port on the backside of the control console. Also, cabling is provided inside and outside the tool.

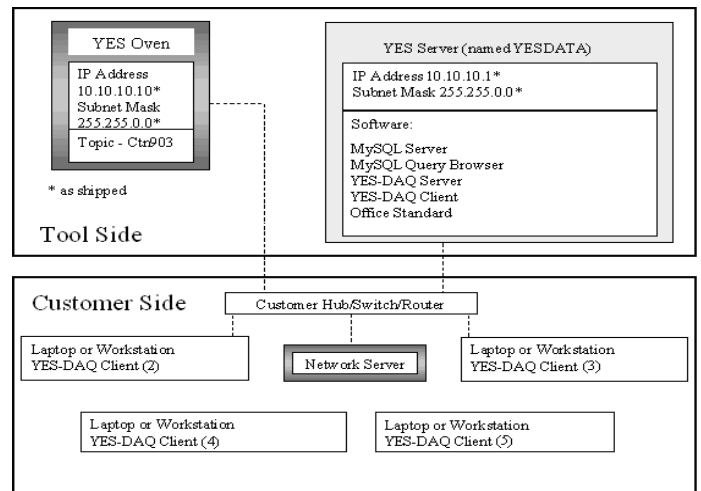


YES-DAQ Analyzing Process Data

Option 2 - Network Option

The network option enables data collection over a network, allowing analysis to be done at any workstation connected to the same network as the tool. The option adds an Ethernet 10/100baseT network port to the CTC tool controller in lieu of the RS-232 port used for the standard version.

Software is the same as the standard version, but includes multiple seat licenses, allowing network access from several locations. Reporting, trending and analysis capabilities are identical to the standard option.



YES-DAQ Network Data Collection Configuration

Conclusion

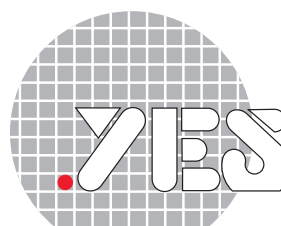
Choosing a software option tailored to meet your requirements depends on multiple factors. We can help you find a solution that is the right fit for your process.

Contact Us

YES has been designing and manufacturing innovative process equipment since 1980.

Call 1-925-373-8353 (worldwide) or 1-888-YES-3637 (US toll-free) for more information or visit us online at www.yieldengineering.com.

©2009 Yield Engineering Systems. Yield Engineering Systems and the Yield Engineering Systems logo are trademarks of Yield Engineering Systems, Inc. All specifications subject to change without notice. Wonderware, IndustrialSQL Server, and InTouch are trademarks of Invensys plc, its subsidiaries and affiliated companies. Microsoft, Microsoft SQL Server and Excel are trademarks of Microsoft Corporation. Control Technologies Corp. is a trademark of Control Technologies Corporation. Incuity is a trademark of Incuity Software, Inc. All other brands, product names and logos are trademarks or service marks of their respective owners.



Yield Engineering Systems, Inc.

203-A Lawrence Drive,
Livermore, CA 94551
Tel: 925.373.8353
Fax: 925.373.8354
www.yieldengineering.com